

Antique Rural Mailboxes

ANTIQUE RURAL MAILBOXES U.S.P.S. APPROVED

Made entirely of aluminum, Salsbury U.S.P.S. approved 4800A series antique rural mailboxes are available in four (4) attractive powder coated finishes. These mailboxes provide an antique look that adds elegance to any home. Each antique rural mailbox features a 1/8" thick extruded aluminum body and a 1/8" thick die cast aluminum front door and rear cover. Each mailbox includes a magnetic door catch and an adjustable burgundy signal flag. The die cast door is attached to the body with a full width stainless steel hinge allowing for smooth operation. See additional specifications on page 77. Antique rural mailboxes can be mounted on standard, classic, decorative or deluxe mailbox posts (see pages 84-89), spreaders (see page 85) or a base of your choice. Antique rural mailboxes are approved for U.S.P.S. curbside mail delivery.

**Volume Discount
Pricing Available
at Mailboxes.com!**



4850A

DESCRIPTION

4850A¹ - Antique Rural Mailbox

UNIT SIZE

7-1/2" W x 9-1/2" H x 20-1/2" D

WEIGHT

15 lbs.

PRICE

\$135.00

¹ Specify



bronze



copper



brass



nickel



#4850A on a 1-sided deluxe post (#4870) in brass finish mounted on the right side (see pages 88-89) with optional custom numbers / letters (see page 105) displayed

ANTIQUÉ NEWSPAPER HOLDERS

Made of heavy duty aluminum, Salsbury antique newspaper holders are a unique option for antique rural mailboxes. Each unit has a solid back and includes mounting hardware to easily attach to mailbox posts and spreaders (see pages 84-89). Antique newspaper holders are available in four (4) attractive powder coated finishes.

DESCRIPTION

4815A¹ - Antique Newspaper Holder

UNIT SIZE

7-1/4" W x 4-1/2" H x 16" D

WEIGHT

10 lbs.

PRICE

\$75.00

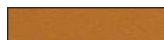


4815A

¹ Specify



bronze



copper



brass



nickel



#4850A's and #4815A's on a two (2) wide spreader (#4882 - see page 85) mounted on a standard post (#4865 - see page 84) in bronze finish displayed

Deluxe Rural Mailboxes

U.S.P.S. APPROVED

Made entirely of aluminum, Salsbury U.S.P.S. approved 4800D series deluxe rural mailboxes feature a 1/8" thick extruded aluminum body and a 1/8" thick die cast aluminum front door and rear cover. Deluxe rural mailboxes also feature a durable textured powder coated finish available in two (2) colors and include an adjustable burgundy signal flag and a magnetic door catch. A full width stainless steel hinge attaches the die cast door to the body allowing for smooth operation. See additional specifications on page 77. Deluxe rural mailboxes and optional matching deluxe newspaper holders can be mounted on standard, classic, decorative or deluxe mailbox posts (see pages 84-89), spreaders (see page 85) or a base of your choice. Deluxe rural mailboxes are approved for U.S.P.S. curbside mail delivery.



DESCRIPTION

4850D¹ - Deluxe Rural Mailbox

UNIT SIZE

7-1/2" W x 9-1/2" H x 20-1/2" D

WEIGHT

15 lbs.

PRICE

\$135.00

4850D

Featuring an Elegant Textured Finish!

REPLACEMENT FLAGS

Made of heavy duty 1/4" thick die cast aluminum, deluxe mailbox replacement signal flags have a durable powder coated burgundy finish and easily attach to deluxe rural mailboxes. Mailbox flags include stainless steel mounting hardware.

4816D - Replacement Flag

- 2-3/4" W x 8" H x 1/4" D
- 1 lb.
- \$10.00



4816D

DESCRIPTION

4815D¹ - Newspaper Holder

UNIT SIZE

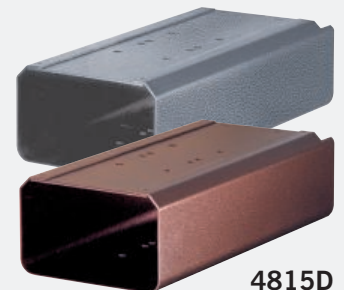
7-1/4" W x 4-1/2" H x 16" D

WEIGHT

10 lbs.

PRICE

\$75.00



4815D

¹ Specify



pewter



mocha